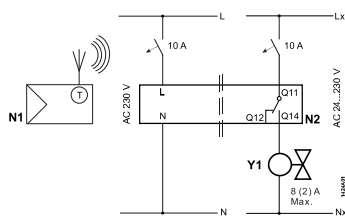
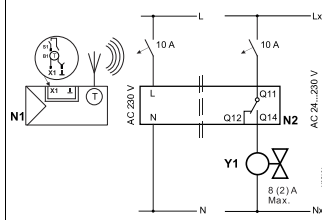


### RDD100.1RFS



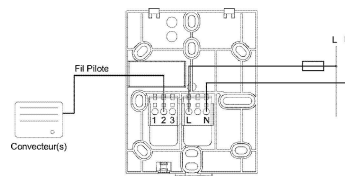
⚠ L-N AC 230 V  
 N1: RDD100.1RF or RDE100.1RF  
 N2: RCR100RF

### RDE100.1RFS



⚠ Lx-Nx 24...230 V  
 N1: RDD100.1RF or RDE100.1RF  
 N2: RCR100RF

### RDE100.1FPRFS (Fil Pilote)



⚠ Lx-Nx 24...230 V



⌚ Max. 1.5 min



1) [www.siemens.com/HIT](http://www.siemens.com/HIT)  
 (HIT start center)

2) "RDE"

3) (doc)

Issued by  
 Siemens Switzerland Ltd.  
 Smart Infrastructure  
 Global Headquarters  
 Thelenstrasse 1a  
 CH-8300 Zug  
 Tel. +41 58 724 2424

© Siemens Switzerland Ltd. 2019  
 Technical specifications and availability subject to change without notice.

# SIEMENS

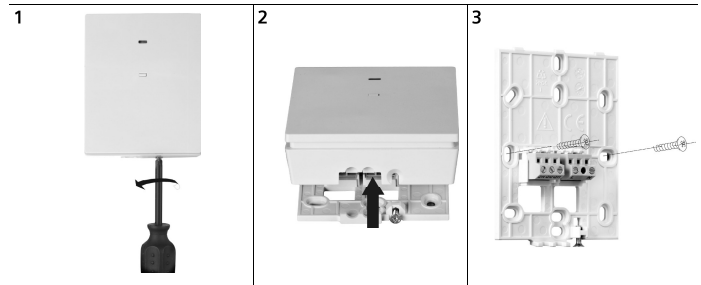
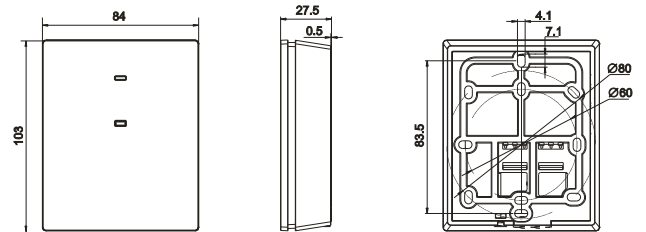


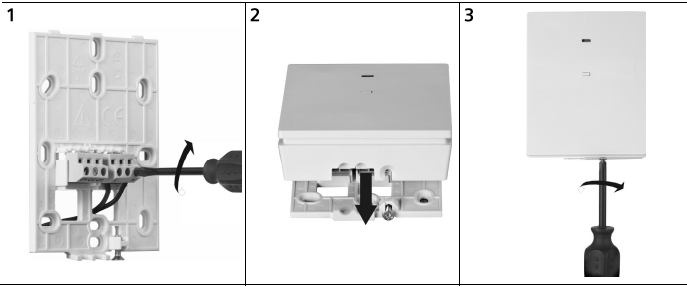
M1439

## RDD100.1RFS RDE100.1RFS RDE100.1FPRFS

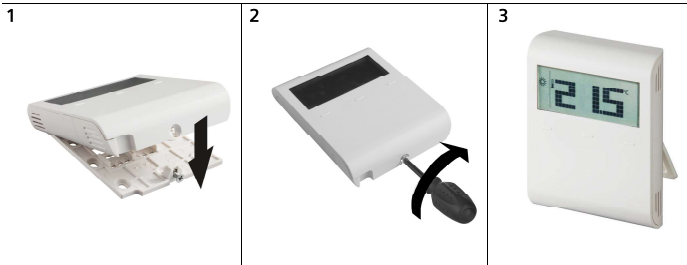
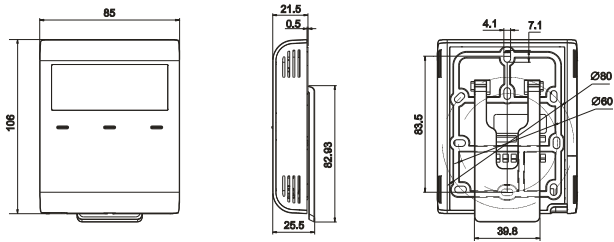
### RCR100...

Dimensions in mm



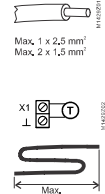
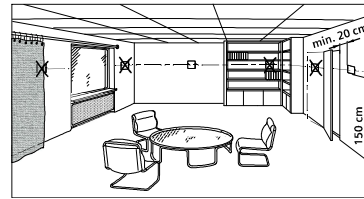
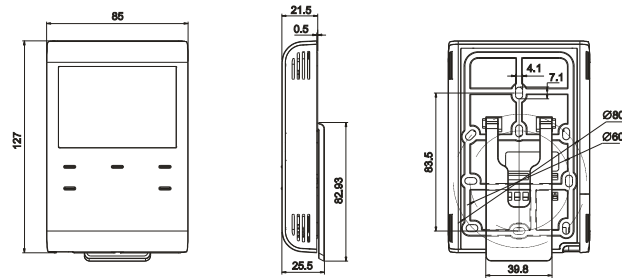


RDD100...  
Dimensions in mm



RDE100...

Dimensions in mm



Max. 1 × 2,5 mm<sup>2</sup>  
Max. 2 × 1,5 mm<sup>2</sup>

Wire [mm <sup>2</sup> ]	Max. [m]
1.5	80

